

DUMPSQUEEN

Blue Prism Accredited Developer Exam

Blue Prism AD01

Version Demo

Total Demo Questions: 10

Total Premium Questions: 105

Buy Premium PDF

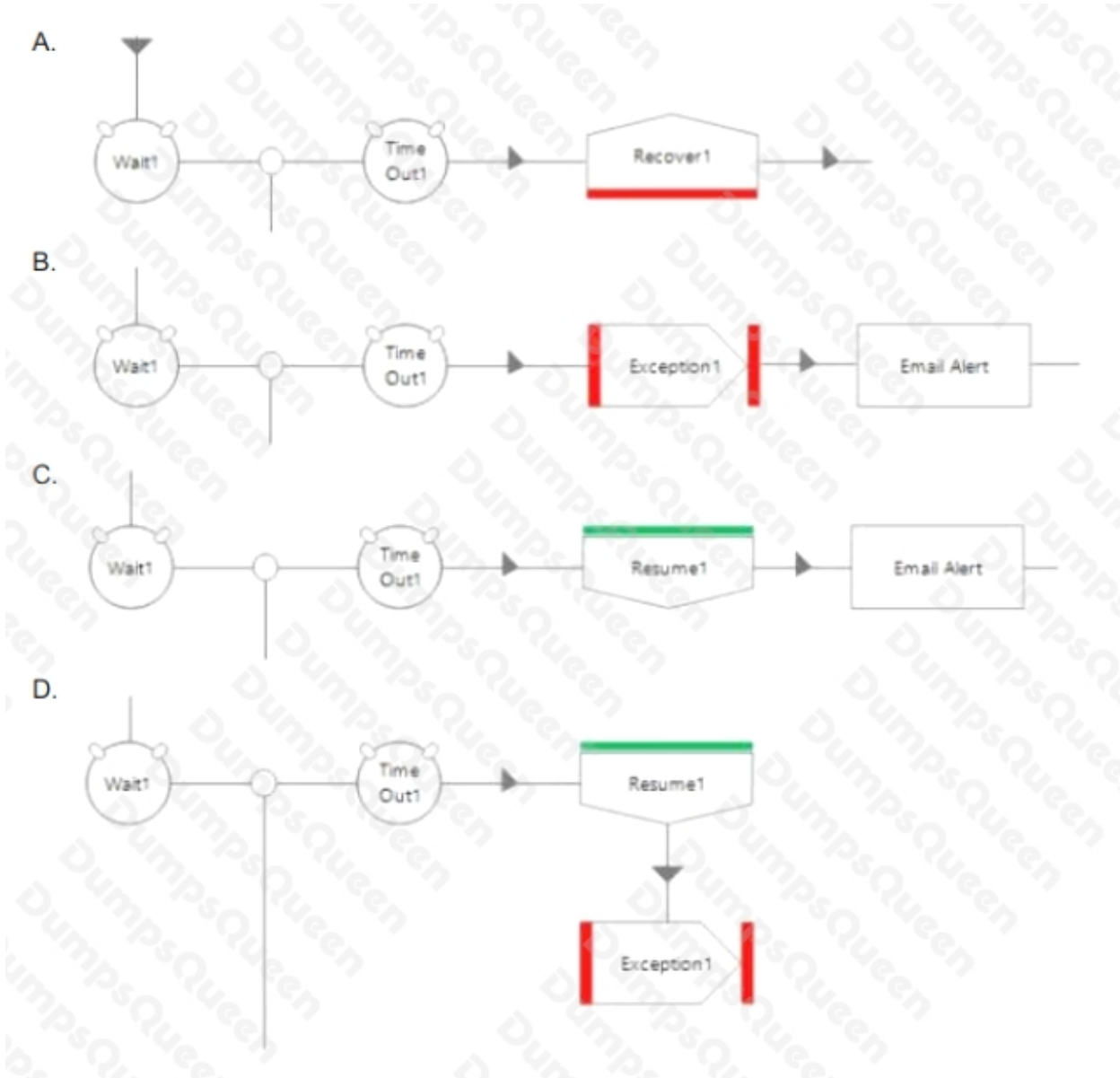
<https://dumpsqueen.com>

support@dumpsqueen.com

dumpsqueen.com

QUESTION NO: 1

Which of the following flow representations are invalid and therefore cannot be recreated in a Blue Prism flow diagram? (Choose two.)

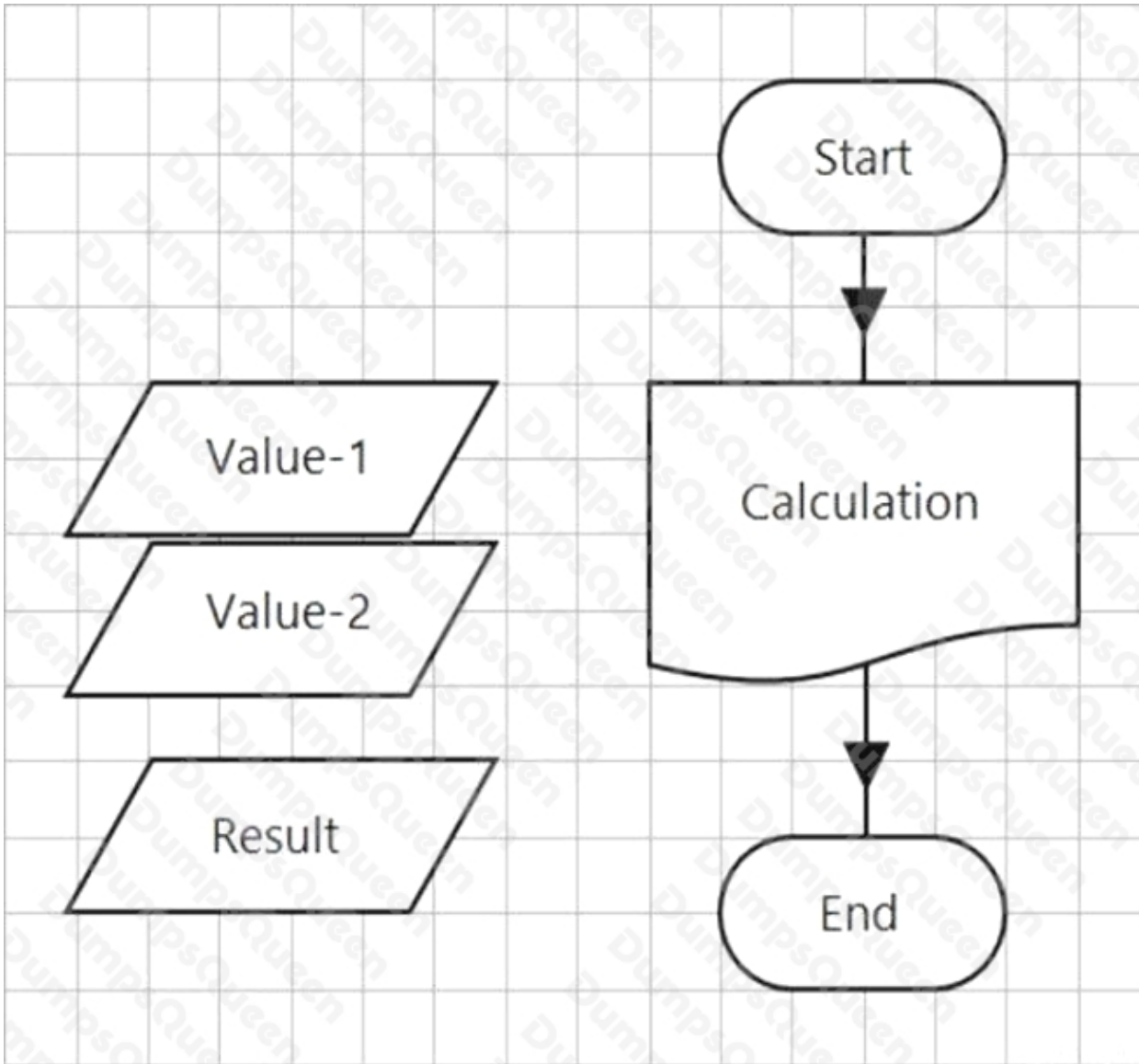


- A. Option A
- B. Option B
- C. Option C
- D. Option D

ANSWER: B C

QUESTION NO: 2

Examine the following Process flow:



This is the Main Page of a simple process which calls the 'Calculation' Page before completing.

The data items are configured as follows:

- Value-1 is a number data item with an initial value of 100.
- Value-2 is a number data item with an initial value of 4.
- Result is a number data item with no initial value.

The Calculation Page Reference stage is configured as follows:

Page Reference Properties

Name: Calculation

Description:

Page: Calculation

Inputs Outputs Conditions

Name	Data Type	Value
Value-1	Number	[Handle]
Value-2	Number	[Handle]

Page Reference Properties

Name: Calculation

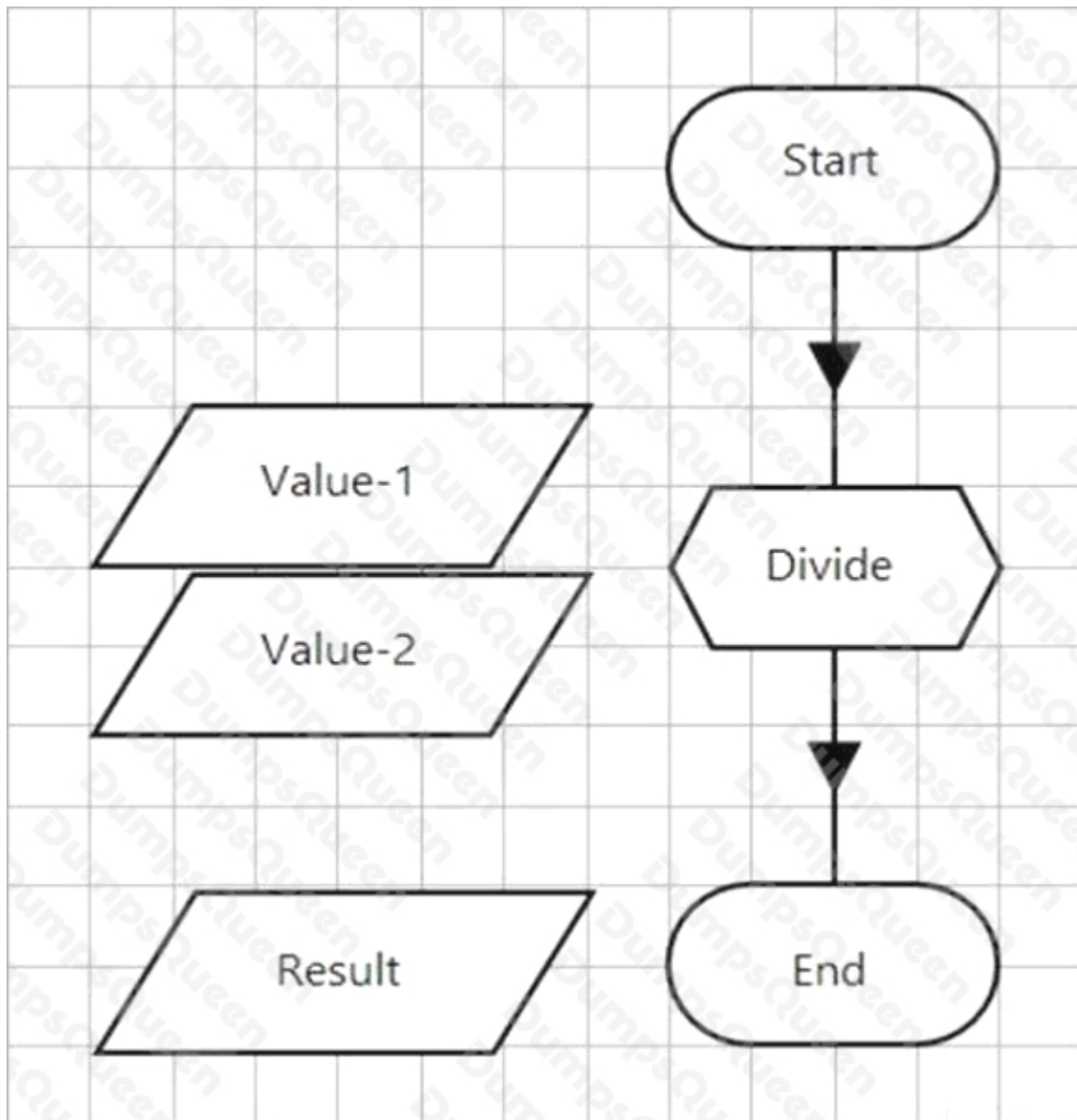
Description:

Page: Calculation

Inputs Outputs Conditions

Name	Data Type	Store in
Result	Number	Result

The Calculation Page is configured as follows:



The Data Items are configured as follow:

- Value-1 is a Number data item with an initial value of 200
- Value-2 is a Number data item with an initial value of 4
- Result is a Number data item with no initial value

The Start stage is configured to pass through the Value-1 and Value-2 values as input parameters.

The 'Divide' Calculation stage expression is $[Value-1] / [Value-2]$

The End stage is configured to pass back the value of the Result data item as an output parameter.

What will be contained in the Result data item on the Main Page following the execution of the Process?

A. 25

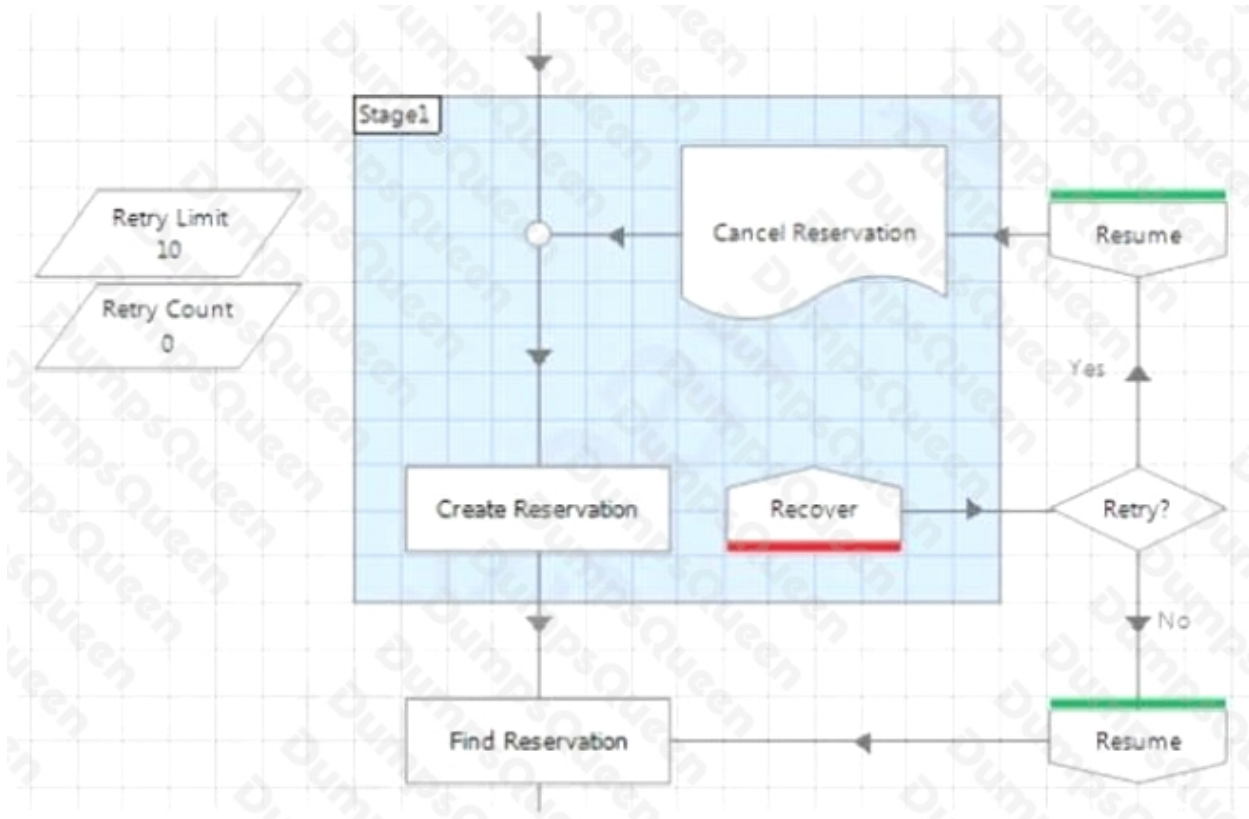
B. 0

C. 50

D. 37.5

ANSWER: B**QUESTION NO: 3**

Examine the following Blue Prism Process diagram:



What potential issues do you see with the current configuration? (Choose two.)

- A. The current configuration is a missing Recover stage on one of the routes through the diagram flow.
- B. The current configuration is a missing Resume stage on one of the routes through the diagram flow.
- C. The current configuration does not increase the Retry Count after each attempt.
- D. If an exception is thrown in the Cancel Reservation page and is allowed to bubble up to be caught by the Recover stage, the Create Reservation action won't be retried.

ANSWER: C D

QUESTION NO: 4

Which of the following statements regarding the use of Work Queues are correct? (Choose two.)

- A. Control Room allows filtering of the displayed queue items using exact Tags and by using wildcards
- B. Wildcards are not allowed in the Tag Filter property of the Work Queues Business Object Get Next Item action
- C. Work Queue Item Status can only be set to Completed or Exception
- D. Tags can be used allow flexibility in the order items are worked within a single Work Queue

ANSWER: A D

QUESTION NO: 5

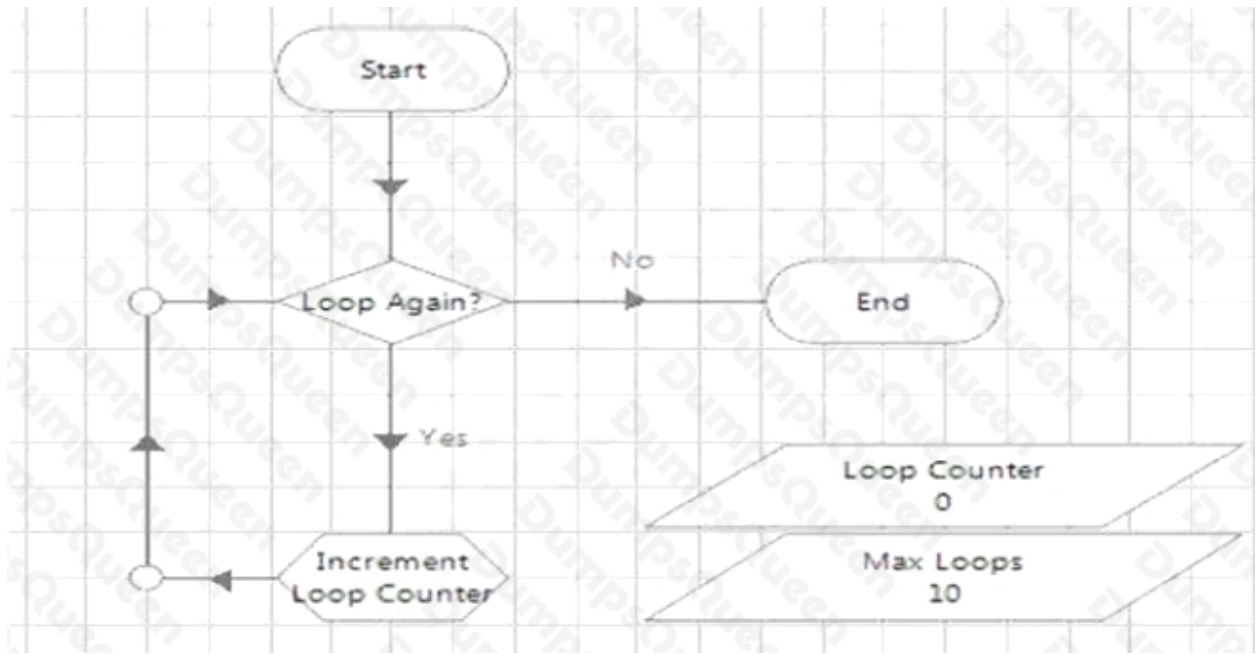
When considering an element's attributes in Application Modeller, which of the following statements are true? (Choose all that apply.)

- A. The attributes are provided to Blue Prism by the Target System
- B. The initial selection of attributes made by Blue Prism will always be the optimum attribute set for the element
- C. The list of attributes may vary from application type to application type
- D. Selected attributes are shown as ticks in the Match column of Application Modeller

ANSWER: A C D

QUESTION NO: 6

Study the following process flow:



The data item "Loop Counter" is a number data item and has an initial value of 0. The data item "Max Loops" is a number data item and has an initial value of 10.

The two stages are configured as follows:

Decision Properties

Name: Loop Again?

Description:

Expression

`[Loop Counter] < [Max Loops]`

Validate Evaluate Expression

Calculation Properties

Name: Increment Loop Counter

Description:

Expression

`[Loop Counter]`

Validate Evaluate Expression Store Result In Loop Counter

How many times will the Loop Again stage be executed when the page is executed?

- A. 10
- B. 9
- C. 11
- D. The loop will be infinite

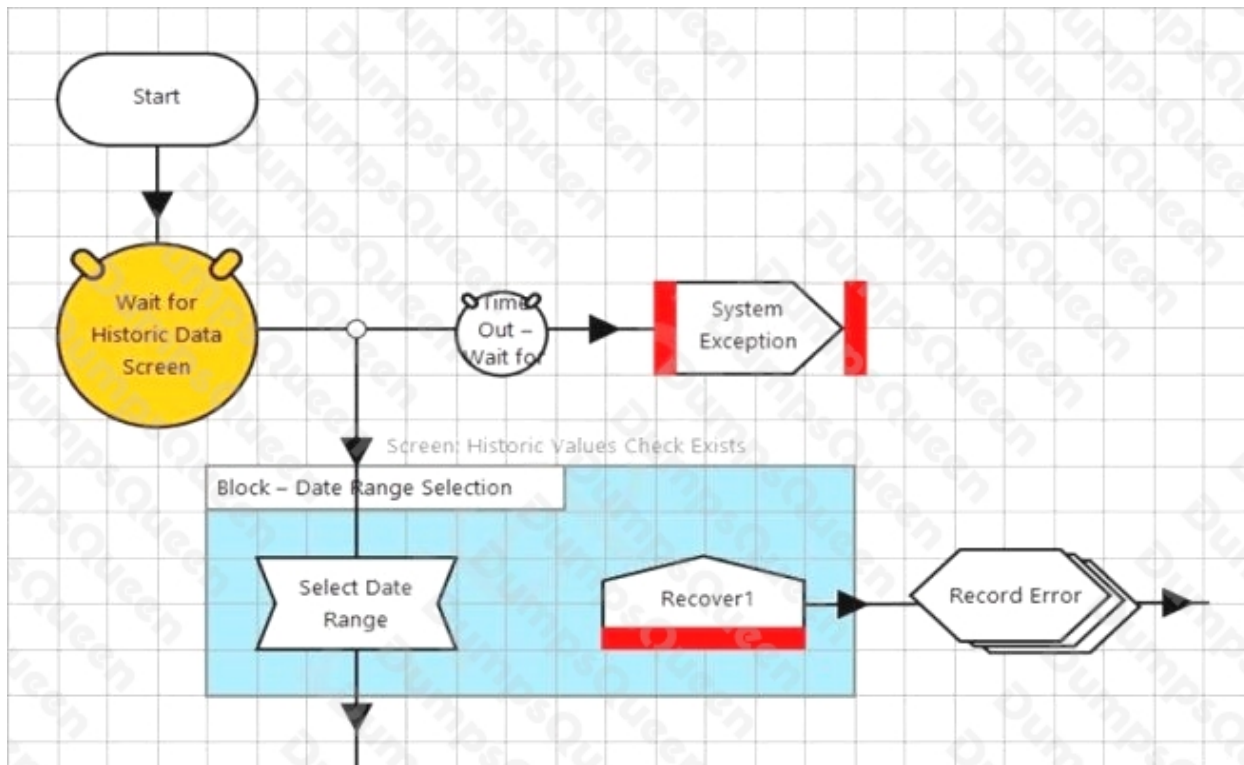
ANSWER: D

QUESTION NO: 7

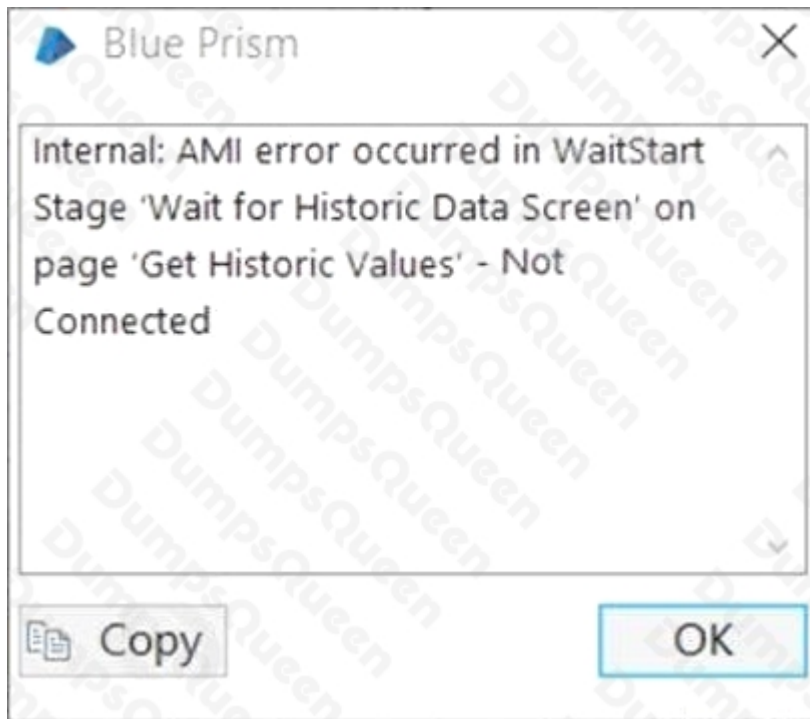
The Stock Value Calculator application has been launched successfully by a Business Object named 'Stock Value Calculator – Basic Actions'.

A second Business Object named 'Stock Value Calculator - Historic Values' is used to interface with the Historic Values screen within the application.

The Wait stage highlighted below has encountered an Internal Exception:



Details of the Exception are provided below:



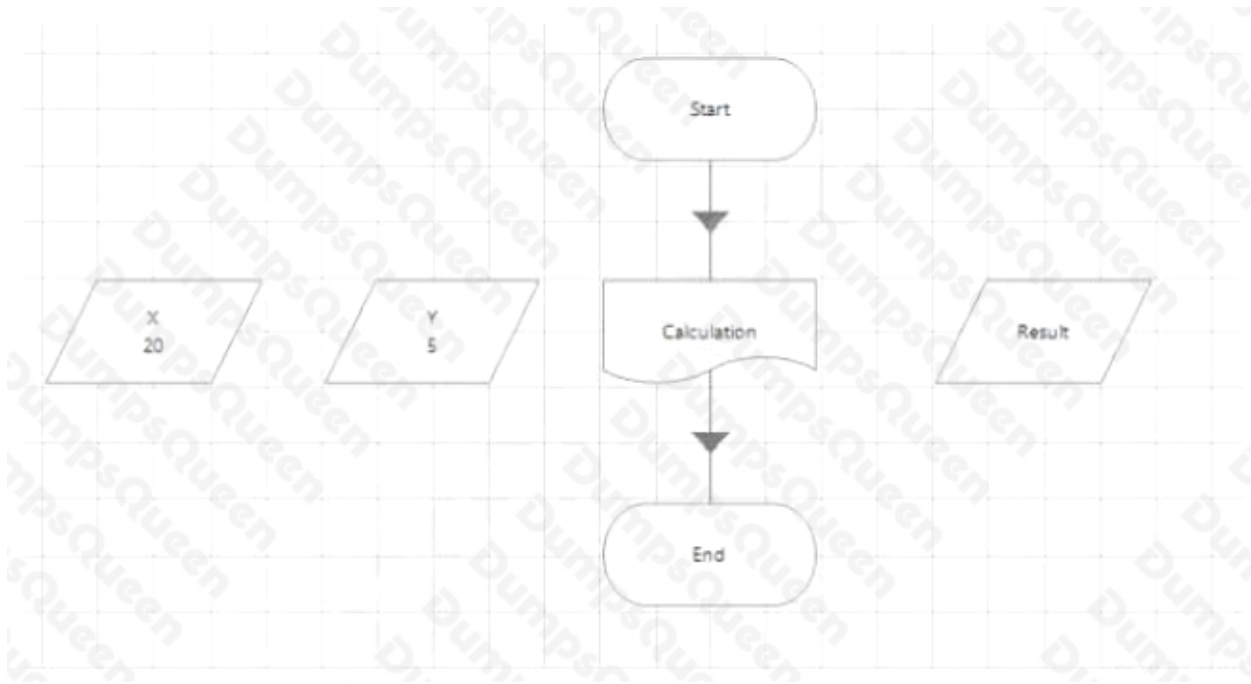
What action is required to present this error occurring?

- A. The Business Object 'Stock Value Calculator - Historic Values' needs to be attached to the Stock Value Calculator application
- B. The Business Object 'Stock Value Calculator - Historic Values' must relaunch the Stock Value Calculator application
- C. The Business Object 'Stock Value Calculator - Basic Actions' needs to be attached to the Stock Value Calculator application
- D. The Business Object 'Stock Value Calculator - Historic Values' needs to activate the Stock Value Calculator application
- E. The Business Object 'Stock Value Calculator - Basic Actions' needs to activate the Stock Value Calculator application

ANSWER: D

QUESTION NO: 8

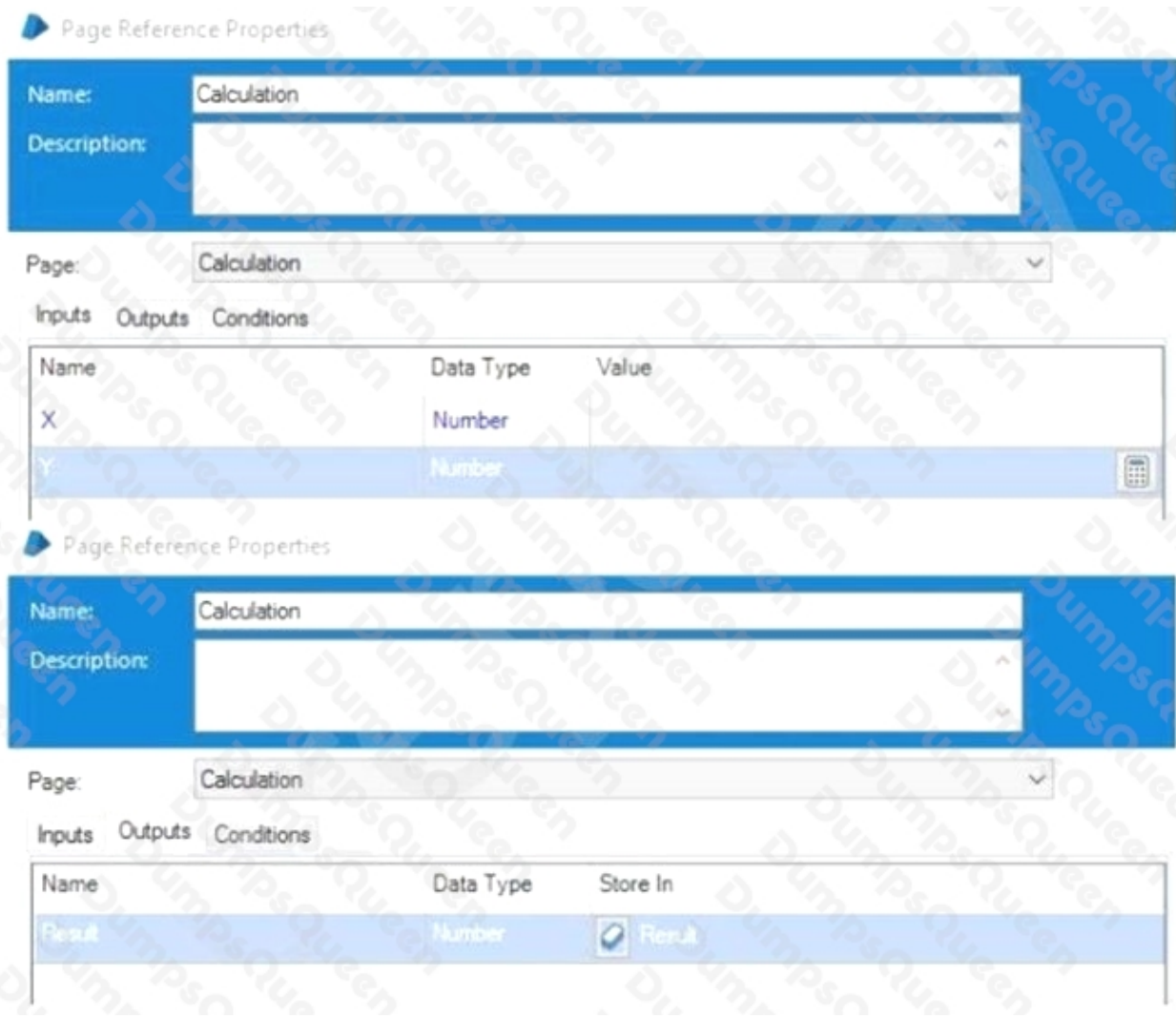
Study the following process flow:



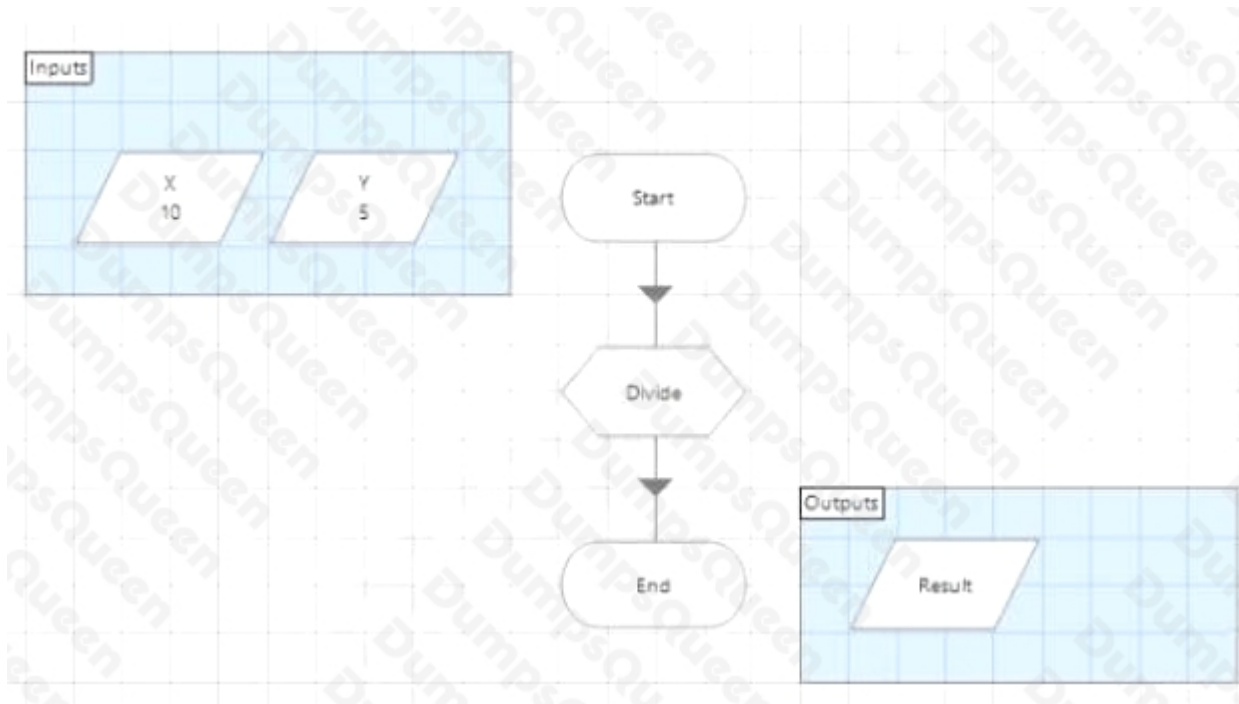
This is the Main Page of a simple process which calls the Page Calculation before completing.

The data items are configured as follows:

- X is a Number data item with an initial value of 20
 - Y is a Number data item with an initial value of 5
 - Result is a Number data item with no initial value
- The Calculation Page stage is configured as follows:



The Calculation Page is as follows:



The Data Items are configured as follow:

- X is a Number data item with an initial value of 10
- Y is a Number data item with an initial value of 5
- Result is a Number data item with no initial value

The Start Stage is configured pass through the X and Y values an input parameters

The divide calculation stage expression is $[X] / [Y]$

The end stage is configured to pass back the results value as an output parameter.

What will be contained in the Result Data Item on the Main Page following the execution of the Process?

- A. 0
- B. No Value
- C. 2
- D. 4

ANSWER: C

QUESTION NO: 9

A process has been created but it is not listed in Control Room. The following reasons have been suggested.

1. The process uses objects with different run modes
2. The process has not been published
3. Process validation shows more than 99 errors
4. The user does not have privileges to run processes in Control Room

Which of the above could cause the process not to be visible in Control Room?

- A. 1 and 2
- B. 2 only
- C. 2 and 3
- D. 1 and 4

ANSWER: D

QUESTION NO: 10

Which of the following can you perform in the System->Workflow area of Blue Prism? (Choose all that apply.)

- A. View the contents of a Work Queue.
- B. Refresh a Work Queue.
- C. Encrypt a Work Queue.
- D. Create a Work Queue.

ANSWER: C D

Explanation:

