

# DUMPSQUEEN

## Wireshark Certified Network Analyst

Wireshark WCNA

Version Demo

Total Demo Questions: 10

Total Premium Questions: 100

Buy Premium PDF

<https://dumpsqueen.com>

[support@dumpsqueen.com](mailto:support@dumpsqueen.com)

dumpsqueen.com

## QUESTION NO: 1

DHCP is based on BOOTP.

- A. True
- B. False

ANSWER: A

## QUESTION NO: 2

An unusually high number of RSTs or a high number of SYN/ACKs with no related data transfer is a strong indication that a TCP scan is underway.

- A. True
- B. False

ANSWER: A

## QUESTION NO: 3

Columns can be reordered by dragging them into their new positions directly in the Packet List pane.

- A. True
- B. False

ANSWER: A

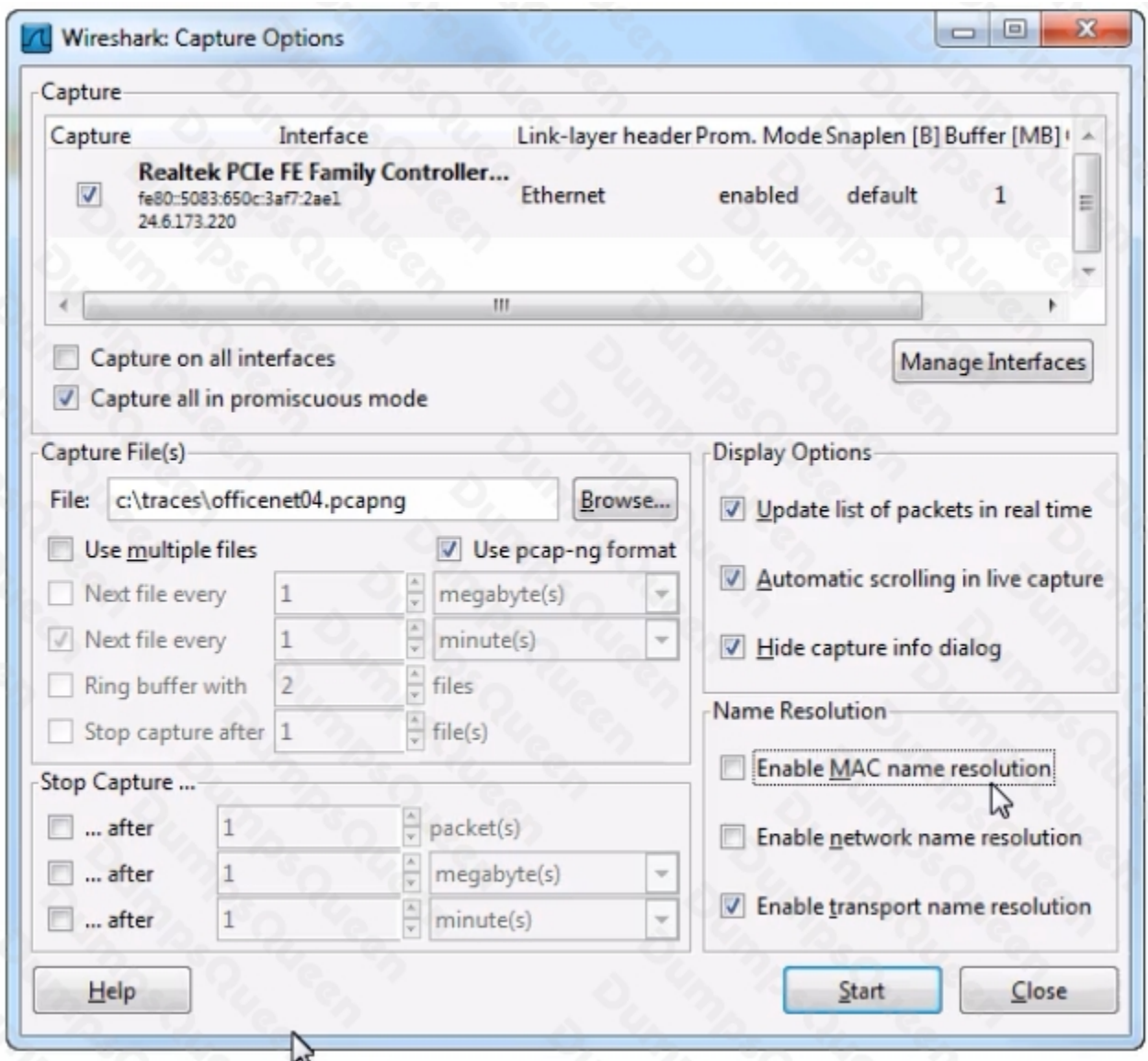
## QUESTION NO: 4

The UDP header checksum is optional.

- A. True
- B. False

ANSWER: A

QUESTION NO: 5



Which statement about the Capture Options window shown is correct?

- A. Wireshark will resolve IP addresses to host names.
- B. Wireshark will scroll to display the most recent packet captured.
- C. Wireshark will attempt to resolve OUI values for all MAC addresses.
- D. Wireshark will automatically stop capturing packets after two files have been saved.

ANSWER: B

## QUESTION NO: 6

Which statement about the TCP recovery process is true?

- A. Packet loss recovery is always started by the client.
- B. The window size field is used in the packet loss recovery process.
- C. TCP hosts attempt three retransmissions before terminating the connection.
- D. Retransmitted packets use the same sequence number as the original lost packet.

ANSWER: D

## QUESTION NO: 7

```
⊕ Frame 229: 712 bytes on wire (5696 bits), 712 bytes captured (5696 bits) on interface 0
⊕ Ethernet II, Src: LiteonTe_58:2b:0d (00:22:5f:58:2b:0d), Dst: D-Link_08:00:27:00:00:00
⊕ Internet Protocol, Src: 192.168.0.111 (192.168.0.111), Dst: 68.142.216.111
⊕ Transmission Control Protocol, Src Port: 7409 (7409), Dst Port: http
⊕ Hypertext Transfer Protocol
  ⊕ GET / HTTP/1.1\r\n
    ⊕ [Expert Info (Chat/Sequence): GET / HTTP/1.1\r\n]
      Request Method: GET
      Request URI: /
      Request Version: HTTP/1.1
      [truncated] Accept: image/gif, image/jpeg, image/pjpeg, application/javascript, application/xhtml+xml, application/xml; q=0.8, */*; q=0.1\r\n
      Accept-Language: en-us\r\n
      User-Agent: Mozilla/4.0 (compatible; MSIE 8.0; Windows NT 6.0; WOW64; Trident/4.0; .NET CLR 3.5.30729; .NET CLR 3.0.30729; .NET CLR 2.0.50727)\r\n
      Accept-Encoding: gzip, deflate\r\n
      Host: www.wiresharktraining.com\r\n
      Connection: Keep-Alive\r\n
      \r\n
```

Which statement about this HTTP packet is correct?

- A. This packet was sent from an HTTP server.
- B. The packet contains a request for a graphic file.
- C. This packet contains an invalid HTTP Request Method.
- D. This packet indicates an HTTP client is browsing www.wiresharktraining.com.

ANSWER: D

## QUESTION NO: 8

Which name resolution process translates port numbers to service names if they are listed in Wireshark's services file?

- A. SMI name resolution
- B. network name resolution
- C. transport name resolution
- D. MAC address name resolution

**ANSWER: C**

## QUESTION NO: 9

Time reference packets are permanently given a timestamp of 00:00:00. When you close and reopen the trace file the time reference information is retained.

- A. True
- B. False

**ANSWER: B**

## QUESTION NO: 10

The Protocol Hierarchy Statistics window helps identify unusual protocols and applications in captured traffic.

- A. True
- B. False

**ANSWER: A**