

DUMPSQUEEN

Administration of Symantec Client Management Suite 8.5

Symantec 250-447

Version Demo

Total Demo Questions: 10

Total Premium Questions: 129

Buy Premium PDF

<https://dumpsqueen.com>

support@dumpsqueen.com

dumpsqueen.com

QUESTION NO: 1

What is the most common purpose for Network Boot Services on a Site Server?

- A. Power management and inventory of endpoints
- B. Distribution of the deployment Jobs/task
- C. distribution of the policy based software installations
- D. Rollins out new computers during initial provisioning

ANSWER: B

QUESTION NO: 2

Which two (2) items are attributes of a configuration item in IT Management Suite 8.5? (Select two)

- A. Resource association
- B. Collation
- C. View
- D. Hierarchy
- E. Data class

ANSWER: A E

QUESTION NO: 3

A customer is complaining about IT Management Suite 8.5 performance in a testing environment. The symptoms include slow population of data tables and reports timing out.

Which two (2) hardware-specific areas could the customer improve to help mitigate these issues? (select two)

- A. Increase memory
- B. Increase cpu cores
- C. Increase disk iops
- D. Increase cpu speed

E. Increase storage capacity

ANSWER: A B

QUESTION NO: 4

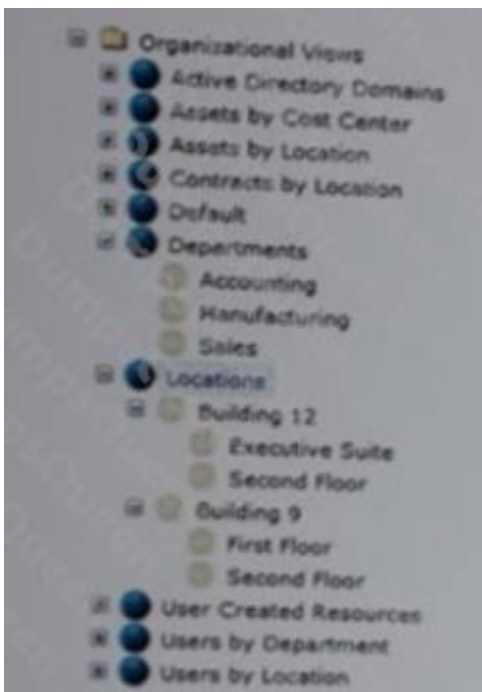
What are two (2) Software update plug-in capabilities? (Select 2)

- A. Sends execution result of applied software bulletins to the notification server
- B. Notifies user before a Managed Delivery policy executes
- C. Gathers specific inventory on supported operating systems, applications, and the associated service pack level
- D. Sends execution results of all software installed to the Notification Server
- E. Gathers an inventory on all installed software and their associated service pack level

ANSWER: A C

QUESTION NO: 5

Refer to the exhibit.



To which two (2) object can an administrator assign a resource? (Select two)

- A. Locations
- B. Building 9
- C. Executive Suite
- D. Active directory domains
- E. Departments

ANSWER: B C

QUESTION NO: 6

What notification server component might be disable if alerts are delayed in appearing in the event console when using monitor solution?

- A. Notification server processing
- B. Purging maintenance
- C. Notification event services
- D. Client task services

ANSWER: A

QUESTION NO: 7

Which procedure should an administrator follow to ensure the enforcement of an agent blackout at system startup?

- A. Add a task to the deployment job that updates the client configuration, setting it to "Randomize next configuration update time"
- B. Configure the advanced Tab on the Symantec Management Agent Package install task to "Enforce an agent blackout at starup"
- C. Configure the downloads tab under global agent settings to use bandwidth throttling and restrict "Agent communications for a set time at startup"
- D. Configure the target agent settings, under the blockouts tab set "disable communications at startup", and add blackout period

ANSWER: D

QUESTION NO: 8

What must an admin create before creating a task to change a computer's domain?

- A. an automation configuration
- B. a distribute personality configuration
- C. a sysprep imaging configuration
- D. a system configuration

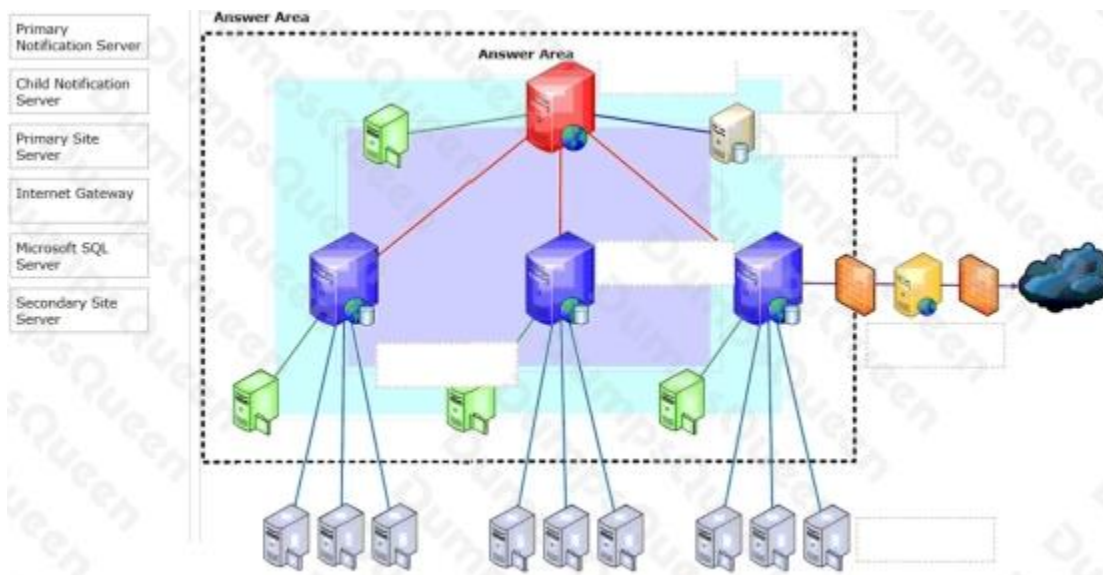
ANSWER: D

QUESTION NO: 9 - (DRAG DROP)

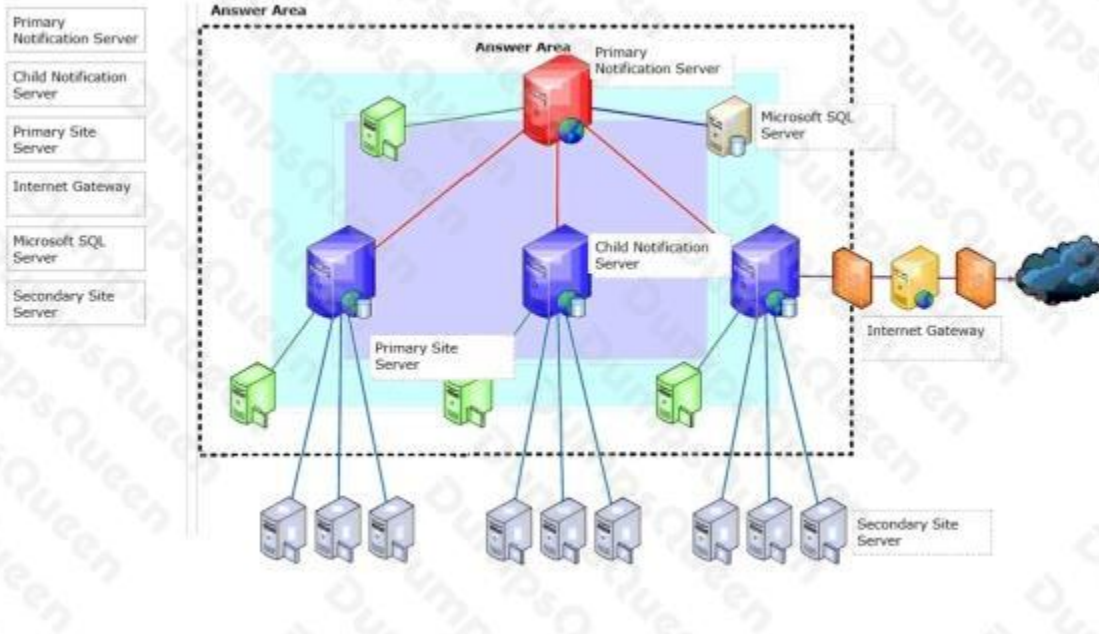
DRAG DROP

Where should an administrator place the IT Management Suite 8.5 solution components in this diagram?

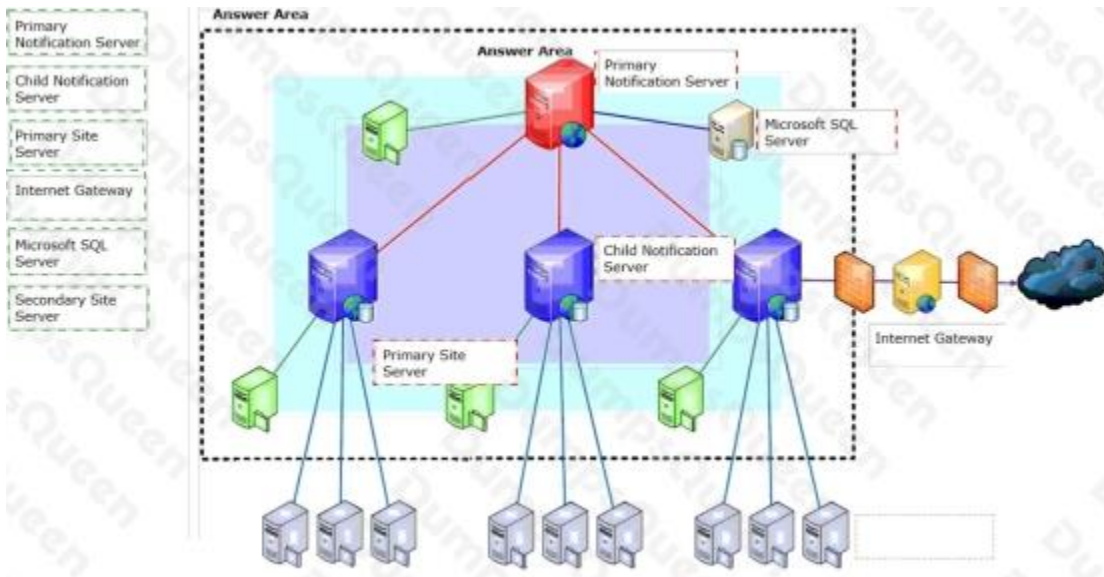
Drag and drop the component name to the appropriate component location in the diagram.



ANSWER:



Explanation:



QUESTION NO: 10

How can an administrator associate an asset with more than one owner?

- A. Set the "Ownership Rule" to "Department Precedence"
- B. Set the "Automatic Updating" of the Organizational Hierarchies
- C. Set the "Ownership Style" to "Multiple" or "Multiple with Warning"

D. Set the "Ownership Details" to the "Edit View" for each asset type

ANSWER: D