

DUMPSQUEEN

Aruba Certified Switching Expert Written Exam

HP HPE6-A69

Version Demo

Total Demo Questions: 10

Total Premium Questions: 60

Buy Premium PDF

<https://dumpsqueen.com>

support@dumpsqueen.com

dumpsqueen.com

QUESTION NO: 1

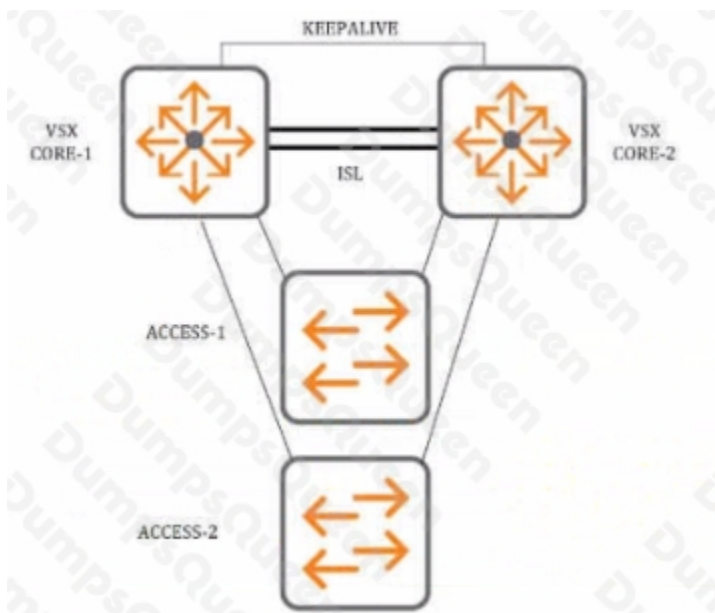
Which statement is true regarding IP-SLA?

- A. ArubaOS-CX supports Doth SLA configuration through CU and by agents through the NAE.
- B. ArubaOS-CX supports forever tests
- C. ArubaOS-CX supports on-demand as well as forever tests.
- D. The default and minimum probe interval for voip SLA is 180 seconds

ANSWER: B

QUESTION NO: 2

Refer to the exhibit.



A customer has implemented this ArubaOS-CX solution. NetEdit is not present. After a while, the secondary node of the VSX-cluster fails. What is the correct procedure to replace the failed node as quickly as possible?

- A. Replace the failed unit, boot up the new node without connecting cables, upgrade firmware and configure as secondary vsx node connect iSL and wait for VSX to synchronize After successful recovery, reconnect the remaining cables.
- B. Replace the failed unit, boot up the new node without connecting cables, upgrade firmware, and restore and save config Shutdown all ports, reconnect the correct cables, and enable all ports
- C. Replace the failed unit, connect the correct cables, boot up the new node in recovery mode, upgrade firmware and restore, and save config Then, reboot and wait for VSX to synchronize.

D. Replace the failed unit, connect the correct cables, boot up the new node and wait for VSX to synchronize configuration and firmware.

ANSWER: A

QUESTION NO: 3 - (DRAG DROP)

Match the reported status to the Aruba 8325 issue (Each option may Be used once more than once, or not at all)

| STATUS | ISSUE |
|----------------------|--|
| <input type="text"/> | Move the 1GBase-T transceiver to a supported port. |
| <input type="text"/> | Define the correct interface-group speed setting. |
| <input type="text"/> | Replace the unsupported Aruba transceiver with a supported revision. |

ANSWER:

| STATUS | ISSUE |
|------------------------|--|
| Incompatible interface | Move the 1GBase-T transceiver to a supported port. |
| Unknown interface | Define the correct interface-group speed setting. |
| Group speed mismatch | Replace the unsupported Aruba transceiver with a supported revision. |

Explanation:

| STATUS | ISSUE |
|------------------------|--|
| Incompatible interface | Move the 1GBase-T transceiver to a supported port. |
| Unknown interface | Define the correct interface-group speed setting. |
| Group speed mismatch | Replace the unsupported Aruba transceiver with a supported revision. |

QUESTION NO: 4

A customer with an ArubaOS-CX 6300M switch is having a performance issue on the network and has received complaints about users experiencing intermittent connectivity. After performing troubleshooting it is determined that many of the local websites on the LAN that users are unable to reach are resolved to an invalid MAC address

What are the minimum steps that should be performed to mitigate this condition? (Select two.)

- A. implement dhcpv4-shooping.
- B. Implement ARP ACLs to define trusted MAC address to IP bindings
- C. Enable 'arp inspection' on the end-user physical ports
- D. Enable 'arp inspection untrusted' on the end-user physical ports
- E. Enable 'arp inspection' on the end-user VLAN

ANSWER: B E

QUESTION NO: 5

Which functionalities of ClearPass can be added in a wired network that implements dynamic segmentation? (Select two.)

- A. Profiling
- B. Fingerprinting
- C. Downloadable user Roles
- D. Multi Factor Authentication
- E. Dynamic VLANs

ANSWER: D E

QUESTION NO: 6

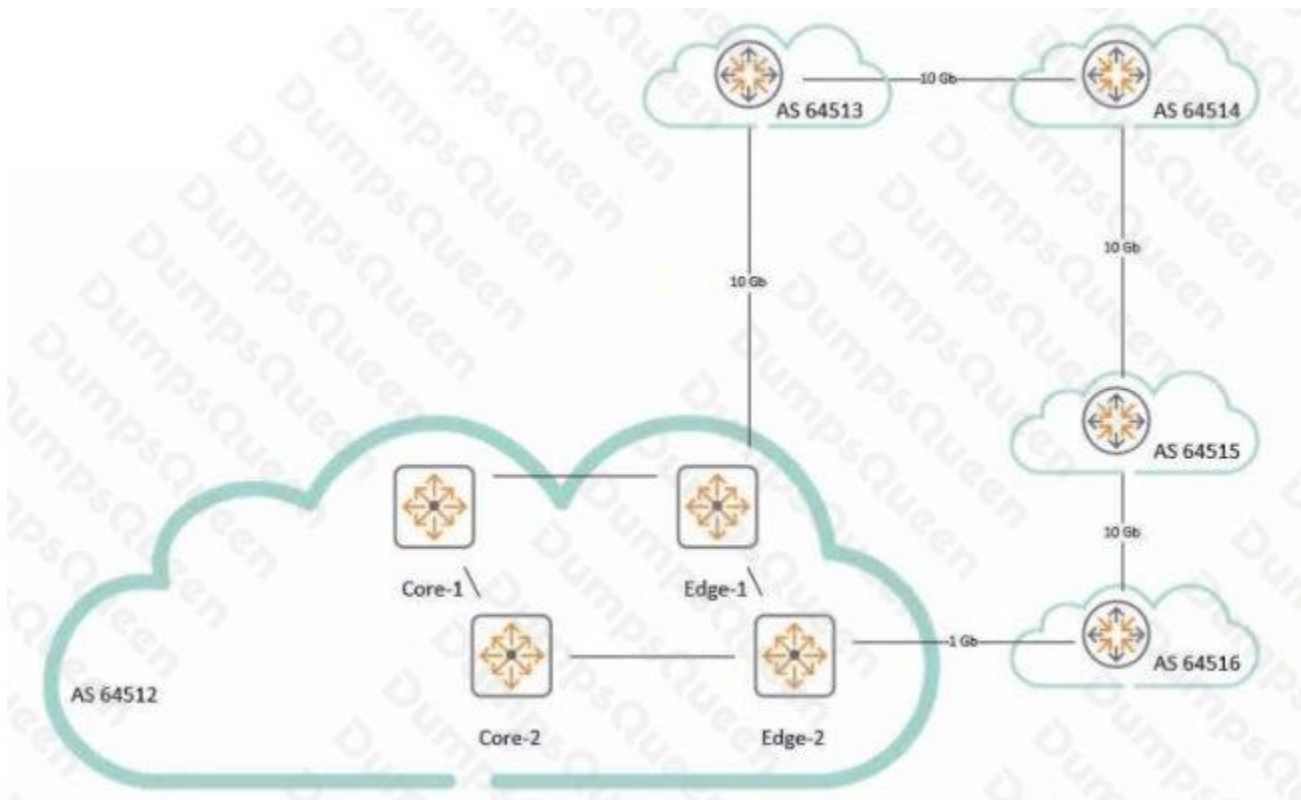
You have removed a member out of the ArubaOS-CX 6300 VSF configuration. The login to the removed member fails. What is true about switch login recovery?

- A. The task requires physical access to the switch
- B. The zeroize task executes the zeroize.txt from the root of the CF card on the switch
- C. The zeroize task will remove all user passwords; the configuration remains on the switch
- D. The task can be executed remotely

ANSWER: A

QUESTION NO: 7

Refer to the exhibit.



Criteria

1. All outbound traffic to AS 64516 prefers Edge-2 to AS 64516
2. All other outbound traffic prefers Edge-1 to AS 64513

Given the customer connectivity depicted in the diagram which single change can be performed on Edge-2 to ensure the criteria are met?

- A. Configure Edge-2 to set ebgp-multihop 3 for the neighbor for AS 64516.
- B. Configure Edge-2 with a route-map to 'set as-path prepend'" to apply 64516 two times to the neighbor for AS 64516.
- C. Configure Edge-2 to set the local preference for specific routes originating from AS 64516 to 200 and all other routes from AS 64516 to 50
- D. Configure Edge-2 to set the weight on specific routes specific to AS 64516 to 1.

ANSWER: D

QUESTION NO: 8

After a Proof of Concept where NetEdit was used to troubleshoot the network, the customer agrees that NetEdit meets some of its technical goals.

Which technical goals does NetEdit meet? (Select two.)

- A. improve reliability of mission-critical applications
- B. improve the network's scalability
- C. improve the network throughput
- D. Minimize network downtime
- E. Simplify network management

ANSWER: A D

QUESTION NO: 9

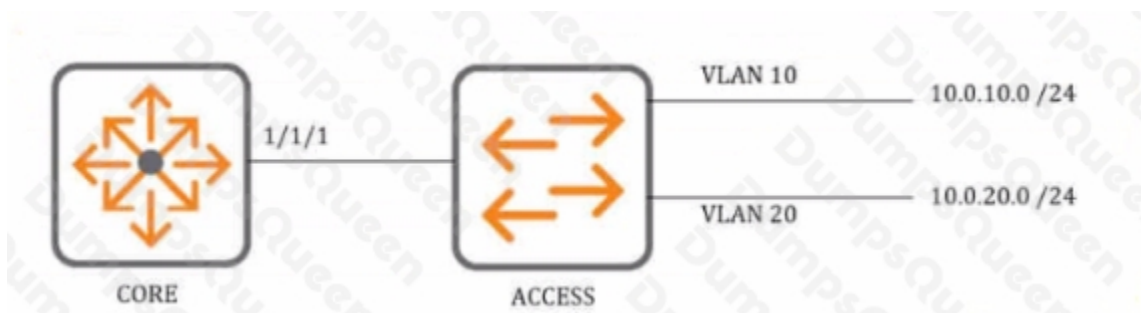
An administrator has identified a denial of service attack that is stressing the management processor on the switch. Which actions can be applied to CoPP to mitigate the issue? (Select two.)

- A. Set the processing priority
- B. Create a policy that matches the payload of GRE traffic.
- C. Regulate traffic from the OOBM Ethernet port
- D. Apply multiple active polices for the classes of traffic

ANSWER: C D

QUESTION NO: 10

Refer to the exhibit.



- For all traffic within VLAN 10, a remark action or DSCP value EF must be set
- For all traffic exiting VLAN 10, a remark action of DSCP value AF41 must be set

Which is the correct configuration?

A)

```
qos trust dscp
class ip VOICE-1
10 match any any 10.0.10.0/255.255.255.0 vlan 10

class ip VOICE-2
10 match any any any vlan 10

policy VOICE
10 class ip VOICE-1 action dscp EF local-priority 5
20 class ip VOICE-2 action dscp AF11 local-priority 4

interface 1/1/1
apply policy VOICE in
```

B)

```
class ip VOICE-1
10 match any any 10.0.10.0/255.255.255.0 vlan 10

class ip VOICE-2
10 match any any any vlan 10

policy VOICE
10 class ip VOICE-1 action dscp EF local-priority 5
20 class ip VOICE-2 action dscp AF11 local-priority 4

interface 1/1/1
apply policy VOICE in
```

C)

```
class ip VOICE-1
10 match any any 10.0.10.0/255.255.255.0 vlan 10

class ip VOICE-2
10 match any any any vlan 10

policy VOICE
10 class ip VOICE-1 action dscp EF local-priority 5
20 class ip VOICE-2 action dscp AF41 local-priority 4

interface 1/1/1
apply policy VOICE in
```

D)

```
class ip VOICE-1
10 match any any 10.0.10.0/255.255.255.0 vlan 10

class ip VOICE-2
10 match any any any vlan 10

policy VOICE
10 class ip VOICE-1 action dscp EF local-priority 5
20 class ip VOICE-2 action dscp AF11 local-priority 4

interface 1/1/1
apply policy VOICE in
```

A. Option A

B. Option B

C. Option C

D. Option D

ANSWER: A